



WINSHUTTLE™

Document Attachment Upload

Technical How-to

Kristian Kalsing / Product Manager
September 2012

Copyright Winshuttle 2012

When to use it?

Examples of use scenarios

- Personnel record
 - Social security
 - National insurance paperwork
 - Proof of residency or citizenship
 - Passport scans
 - Work permits
 - Personnel photos
 - Training certificates
- Sales order
 - Faxed/scanned orders
 - Faxed/scanned invoices
 - Purchase orders and requisitions
- Material master
 - Drawings
- Customer master
 - Credit check receipts
 - Registration certificates
- Vendor master
 - Credit check receipts
 - Registration certificates

Prerequisites

- Studio 10.4
- Foundation 10.4
- RFC Authorizations
 - For the S_RFC authorization object, the BDS_BAPI value is required
 - Access to object S_BDS_DS is required with all values except lock and delete

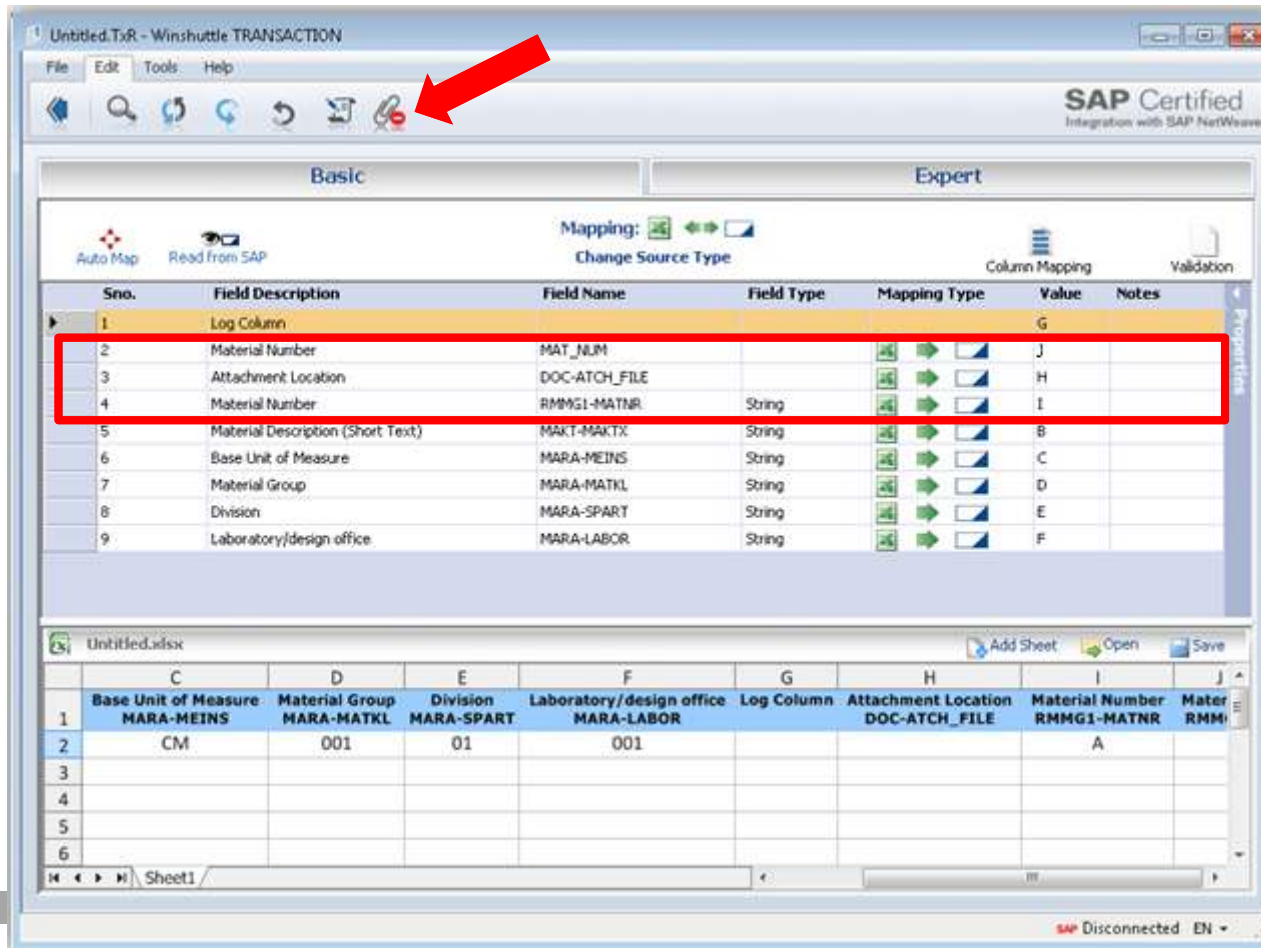
Create Transaction script with document attachment upload

Map file location and required metadata

Only available for predefined list of supported T-Codes.

'Create' T-Codes are not supported because we require the key identifier beforehand.

You may need to use linked scripts with one creating the record and another attaching the document.



Click the attachment icon to show fields for file location and required metadata.

This icon is only visible for supported T-Codes.

Enter local path at runtime

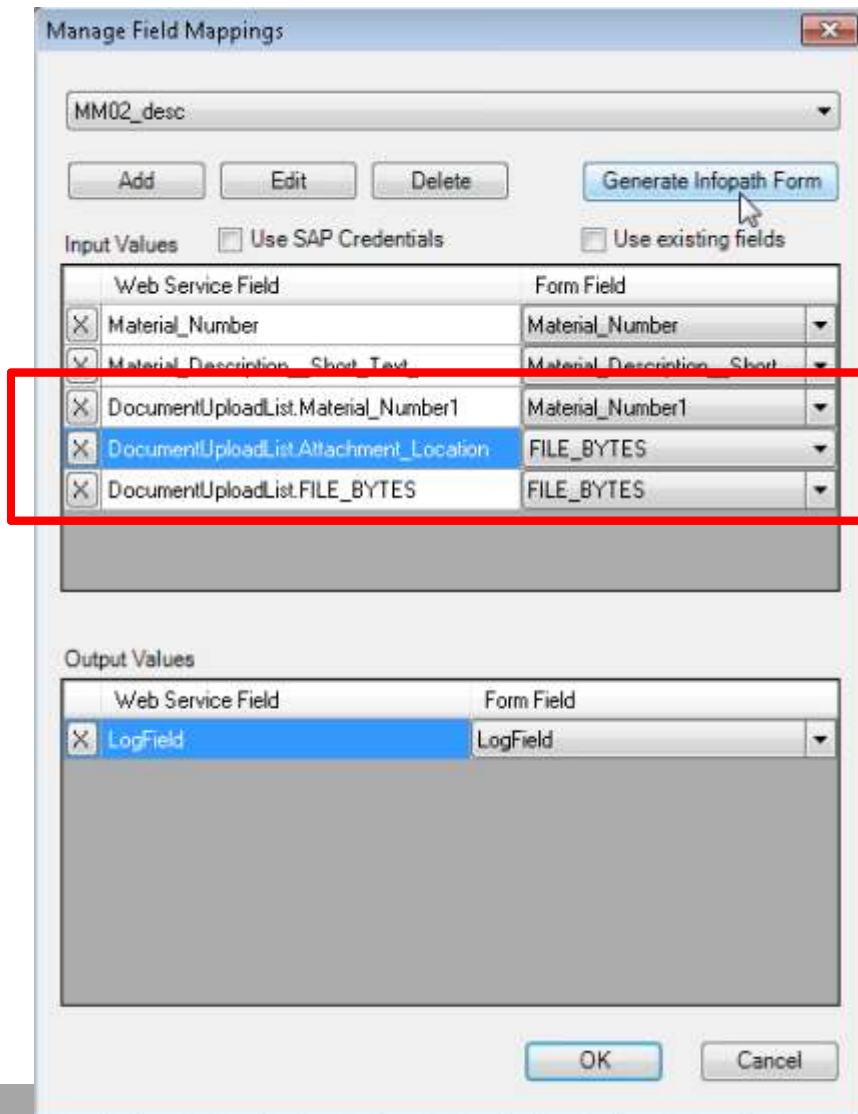
Only supported when running locally

- No Autopost or scheduling
- No data review via Central

Function	Alignment	Number	Style
C:\temp\BOM.txt			
F	G	H	I
actory/design office IARA-LABOR	Log Winshuttle TRANSACTION 10.4 MM02.TxR 8/28/2012 2:09:17 PM Mode: Non-Batch without Controls WE6-800, kristiank	Attachment Location DOC-ATCH_FILE	Material Number RMMG1-MATNR
001		C:\temp\BOM.txt	KK2012082700

Create web form with document attachment upload

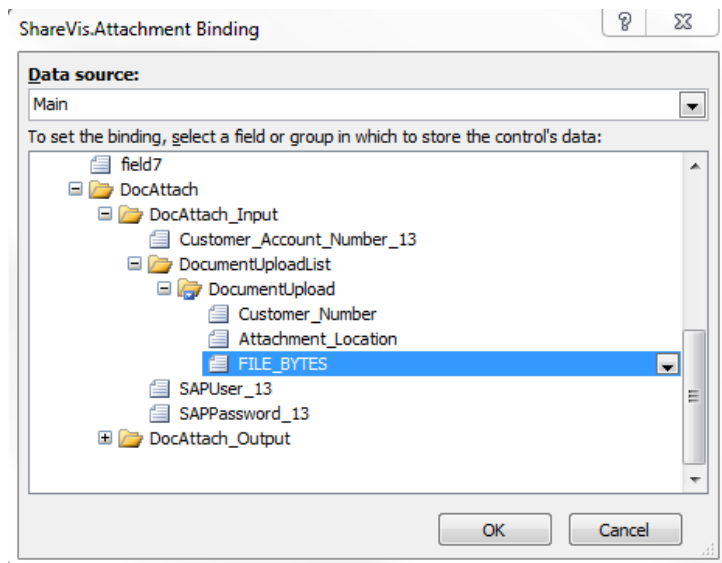
Map fields in Designer



When using a script that includes uploading a document, the file location and required metadata fields are shown in 'Manage Fields Mappings' for the script.

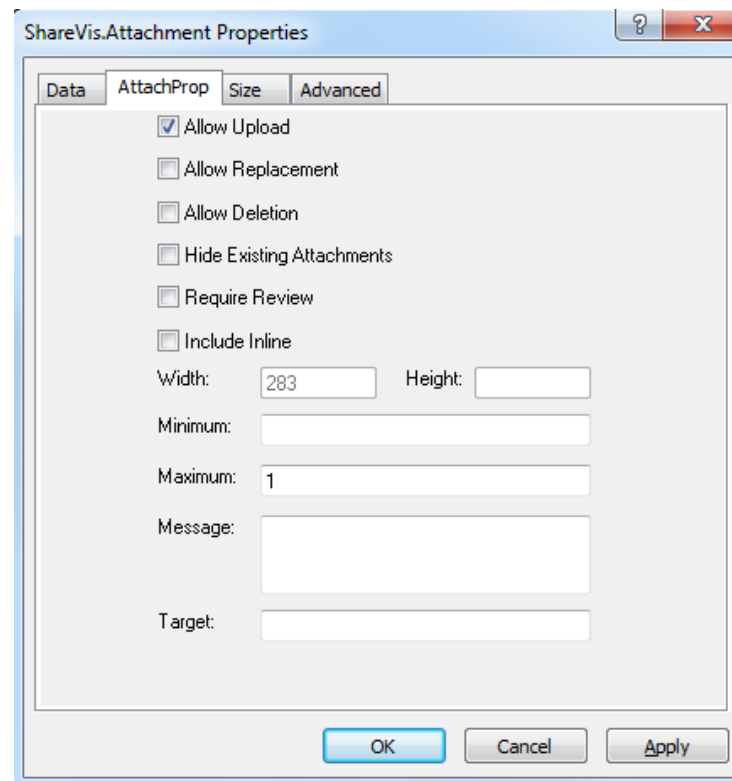
Note that both 'Attachment_Location' and 'FILE_BYTES' need to be mapped to 'FILE_BYTES'

Configure ShareVis.Attachment control



Change the binding of the ShareVis.Attachment control to the 'FILE_BYTES' field.

(Remember to change the binding on all views with the control.)



In the properties of the ShareVis.Attachment control, set 'Maximum' to '1'.

(Current only one document per attachment control is supported)

Add attachment control to form

- After generating the InfoPath form, add the Sharevis.Attachment control to the form. The binding of this control must be set to the FILE_BYTES field.
- The 'SAP Web Service' button and the attachment control must both be displayed on the same form view.
- The end user is required to select the local file to be attached before pressing the 'SAP Web Service' button. Use validations to ensure that a file has been selected before attempting posting to SAP.
- You cannot do this on the initial form view in a process because there is no list item to store attachments in until the process has started. Hence, attachments have to be uploaded in a workflow action that is not the start node.

Known issues and limitations

- Not supported for Autopost or scheduling.
- Not supported with data review workflow.
- Only supported for predefined list of T-Codes (see later slide).
- Maximum file size: 5MB.
- Not supported in Winshuttle Update workflow plugin
- In a web form, only one document per attachment control can be uploaded.
- In a web form, repeated attachment controls are not supported.
- In a forms-based workflow, document uploads cannot be invoked in the start node/view.
- Log shows that the upload is successful even if the object (e.g. material) does not exist.

FAQs

Which T-Codes are supported?

T-Code	Required Metadata
FB02 / FB03	Company Code Document Number Fiscal Year
AS02 / AS03	Company Code Main Asset Number Asset Subnumber
VA02 / VA03	Order Number
ME22N / ME23N	Order Number
ME52N / ME53N	Requisition Number
MM02 / MM03 CS02 / CS03	Material Number
XD02 / XD03 FD02 / FD03	Customer Number
FD32 / FD33	Customer Number Credit Control Area
XK02 / XK03 MK02 / MK03 FK02 / FK03	Vendor Number
PA30	Personnel Number

The list of supported T-Codes and required metadata is defined in a local XML file at the following location:

C:\Program Files\Winshuttle\TRANSACTION\ShuttleRule.xml

Which file formats are supported?

Attachments in the following file formats can be uploaded:

- PDF
- TIFF
- JPEG
- PNG
- DOC
- DOCX
- XLS
- XLSX
- TXT

How can I upload multiple documents?

In a forms-based scenario you can upload multiple documents by adding multiple attachment controls to the form.

Each attachment control needs to be bound to a separate script. Every script runs independent of others. The attachment controls are mapped to the fields of the respective scripts.

The multiple attachment controls have to be added individually. Repeated attachment controls are not supported.

WINSHUTTLE™